

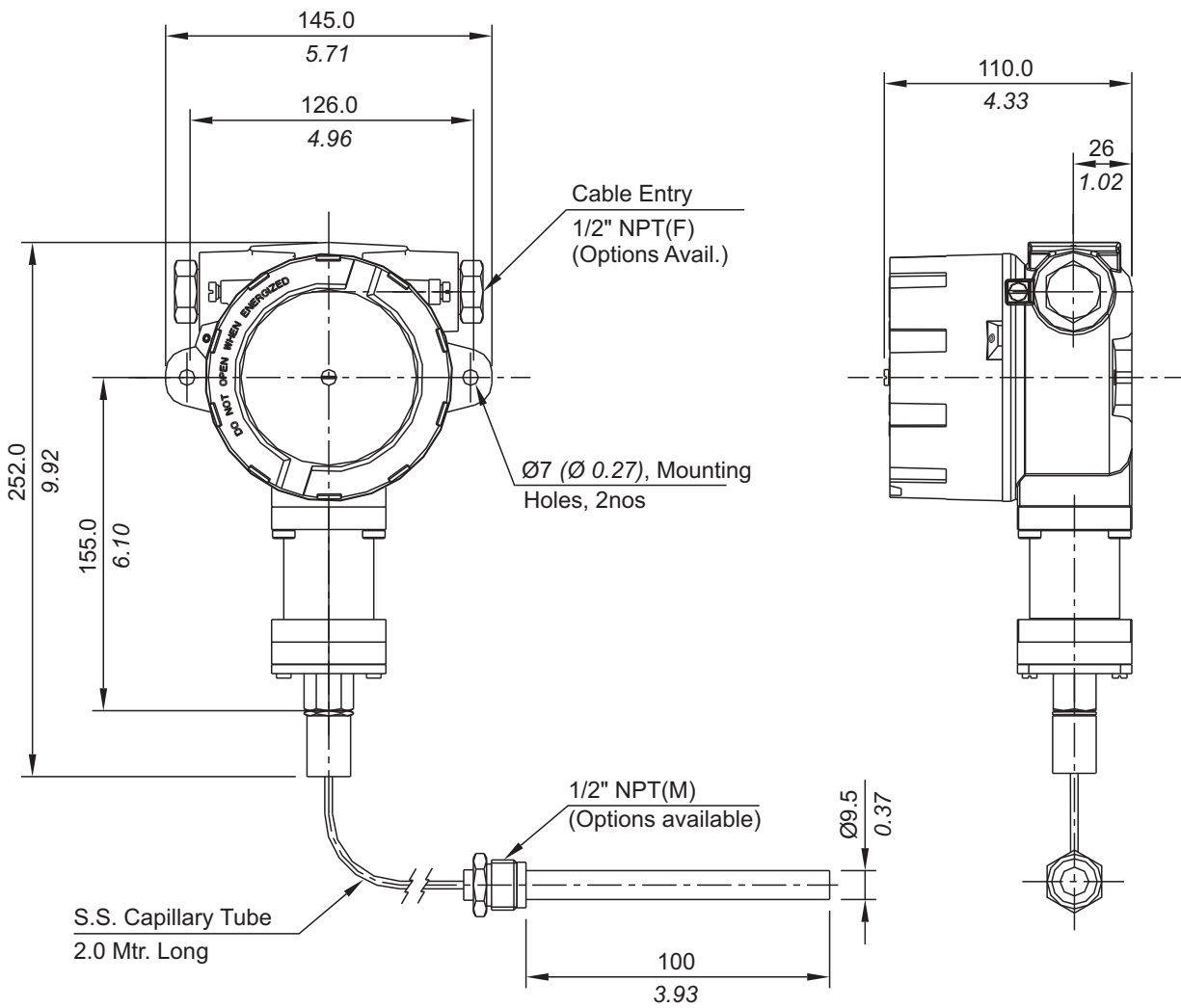
FC/FE TEMPERATURE SWITCHES



FC



INSTALLATION DRAWING



APPROX. DIMENSIONS IN $\frac{\text{mm}}{\text{inches}}$

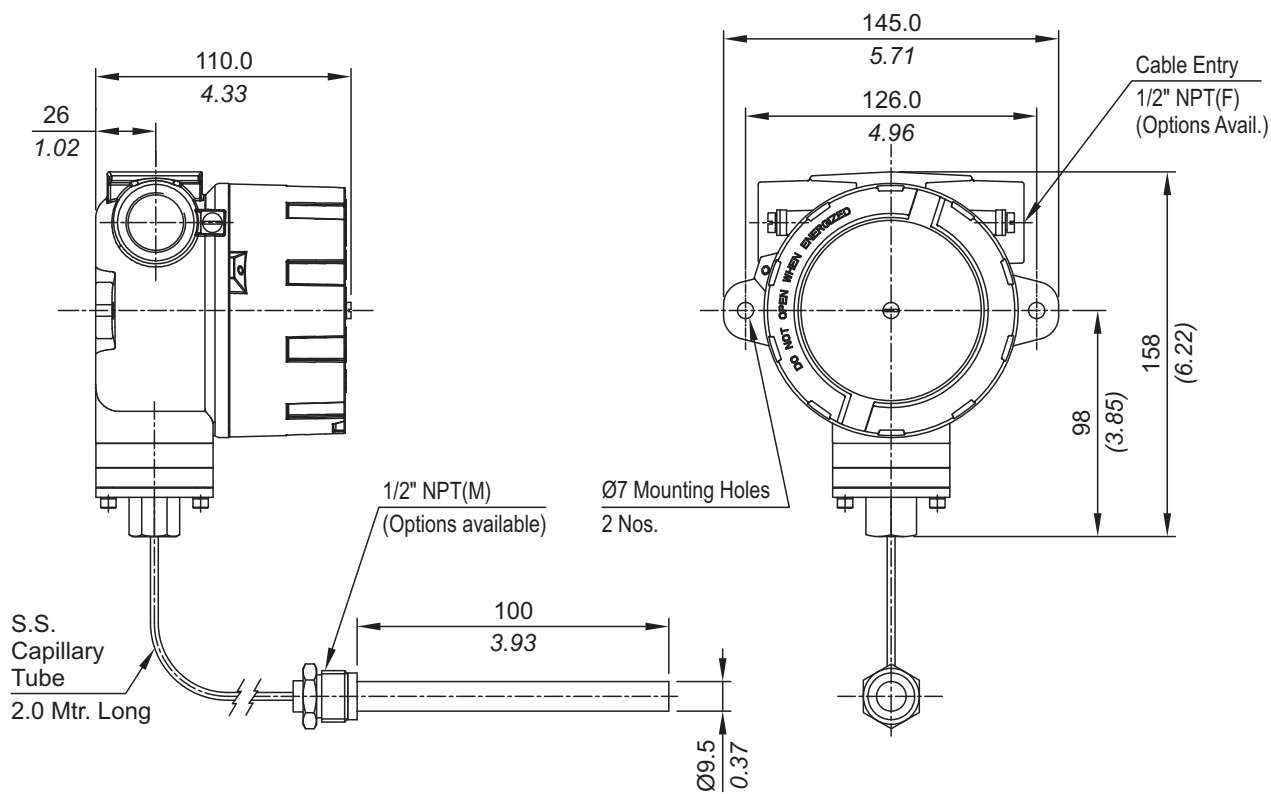
TEMPERATURE SWITCHES FC/FE



FE



INSTALLATION DRAWING



APPROX. DIMENSIONS IN $\frac{\text{mm}}{\text{inches}}$

FC/FE TEMPERATURE SWITCHES

RANGE SELECTION TABLE

| Range Code | Range °C (°F) | Differential* °C (°F) | Maximum Working Temperature °C (°F) |
|------------|--------------------------|---|--|
| | | Approximate Maximum for "A1" microswitch | |
| T1H | 25 - 90 (77 - 194) | 15 (59) | 150 (302) |
| T2H | 70 - 150 (158 - 302) | 20 (68) | 200 (392) |
| T3H | 120 - 215 (248 - 419) | 30 (86) | 300 (572) |

* Approximate differential at midrange for A1 microswitch. Differentials increase with setpoint. Differentials vary with microswitch combinations. Please consult sales office for details

HOW TO ORDER FLAMEPROOF TEMPERATURE SWITCHES

| Group 1 | Group 2 | Group 3 | Group 4 | Group 5 | Group 6 | Group 7 | Group 8 |
|---|---|---|---|---|--|---|------------------------------|
| Non standard allocation | Gas Group Classification | Cable Entry Size | Switch Type | Range Code (values in Deg. Cen.) | Microswitch Type | Temp. Bulb Material / Size | Capillary Material / Size |
| <input type="checkbox"/> Reserved for Non-standard Options not covered in Catalogue. Will Be given by Manufacturer, Only after Agreement of Supply details With customer. | FC = Flameproof temperature switch, ATEX & IECEx approved, with Aluminium head as per IS/IEC 60079-1 for Gas Gr. IIC FE = IP66 Flameproof pressure switch, KLPL approved | 1 = Al. head 1/2" NPT threads 2 = Al. head 3/4" NPT threads 3 = Al. head M20 x 1.5 threads 7 = SS head 1/2" NPT threads 8 = SS head 3/4" NPT threads 9 = SS head M20 x 1.5 threads | T1 = Temperature Switch, fixed differential without scale T2 = Temperature Switch, fixed differential with scale in °C | T1H = 25 - 90 T2H = 70 - 150 T3H = 120 - 215 | A1 = General purpose microswitch rated at 15 A; 250 VAC A6 = Elements with adjustable differential A7 = 2SPDT switching elements B6 = Hermetically Sealed Gold Plated contact 2SPDT | B1 = Brass / Dia. 9.5 mm, 123 mm length, with 3/8" BSP (M) thermowell connection B2 = Brass / Dia. 9.5 mm, 123 mm length, with 3/8" NPT (M) thermowell connection B3 = Brass / Dia. 9.5 mm, 123 mm length, with 1/2" NPT (M) thermowell connection | 2 = SS316 / 2.0 meter |

E.g. A Flameproof Temperature switch, with 1/2"NPT cable entry in aluminum housing as 1 SPDT, fixed differential without scale, having 25°C to 90°C temperature range, with 15 Amp. microswitch, with Brass 9.5 mm diameter bulb, having length 123 mm with 3/8"BSP(M), with 2.0 meter SS316 capillary length shall be specified by

| Group 1 | Group 2 | Group 3 | Group 4 | Group 5 | Group 6 | Group 7 | Group 8 |
|--------------------------|---------|---------|---------|---------|---------|---------|---------|
| <input type="checkbox"/> | FC | 1 | T1 | T1H | A1 | B1 | 2 |

Please specify full model number to avoid ambiguity.