

# Cam lock Coupling

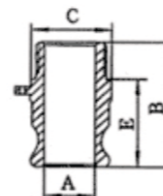
PERFECT - TITE couplings enable pipe and hose connections to be made without the use of hands tools; thus eliminating the difficulty in making threaded connections or a flanged connection. Almost instantly connections can be made to an outlet, a faucet, a valve, a tank or coupling lengths of hose. No pipe fitting skills, wrenches or tools are required. A connection is made by simply pushing the handles down to the sides of the coupler.

## DESIGN AND CONSTRUCTION



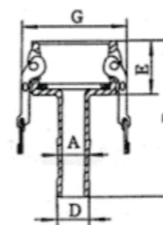
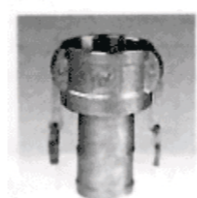
- SUPERIOR quality body – precision machined surfaces
- Meets or exceeds Military standards
- Highest quality standards employed
- Uniform wall thickness assessors no coupler bodies
- Large diameter cam ears for longer service life
- Extra high strength handles for assurance in connections
- Recess retains gasket in coupler
- Stainless Steel cam pins for long wear and ease of replacement

# Cam lock Coupling



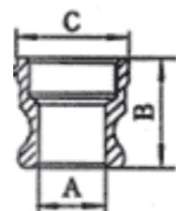
TYPE-F

SIZE	1/2"	3/4"	1"	1 1/4"	1 1/2"	2"	2 1/2"	3"	4"	5"	6"
A	21	21	24	28.5	36	45	56.5	73	98	122	148
B	56	56	72	80	84	88	100	106	114	121	130
C	32	32	40	48	56	67	83	96	127	154	190
E	39	39	48	48	56	61	62	69	74	79	82



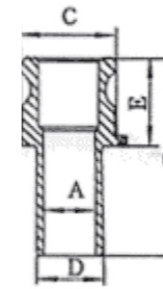
TYPE-C

SIZE	1/2"	3/4"	1"	1 1/4"	1 1/2"	2"	2 1/2"	3"	4"	5"	6"
A	16	19	26	30	39	50	58	72	98	122	145
B	52	52	62	68	71	78	85	91	96	102	118
D	32	32	40	48	56	67	83	96	127	154	190
E	32	32	40	48	49	54	59	60	62	62	72
G	53	53	60	78	85	96	110	127	156	185	220



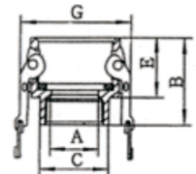
TYPE-A

SIZE	1/2"	3/4"	1"	1 1/4"	1 1/2"	2"	2 1/2"	3"	4"	5"	6"
A	21	21	24	28.5	36	45	56.5	73	98	122	148
B	38	38	48	56	60	46	87	73	78	95	86
C	32	32	40	48	56	67	83	96	127	154	190



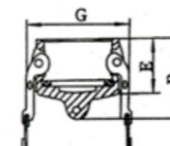
TYPE-E

SIZE	1/2"	3/4"	1"	1 1/4"	1 1/2"	2"	2 1/2"	3"	4"	5"	6"
A	14	19	24	28	35	48	58	72	98	122	145
B	98	98	110	121	125	140	158	170	182	196	220
D	20	20	26	33	39	52	65	77	103	130	155
E	40	40	46	53	56	61	65	66	70	72	79
C	34	34	38	48	56	66	80	102	132	154	184



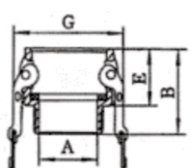
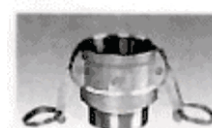
TYPE-D

SIZE	1/2"	3/4"	1"	1 1/4"	1 1/2"	2"	2 1/2"	3"	4"	5"	6"
A	16	19	26	30	39	50	58	72	98	122	145
B	52	52	62	68	71	78	85	91	96	102	118
C	32	32	40	48	56	67	83	96	127	154	190
E	32	32	40	48	49	54	69	60	62	62	72
G	53	53	60	78	85	96	110	127	156	185	220



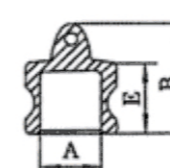
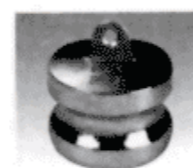
TYPE-Dus Cap

SIZE	1/2"	3/4"	1"	1 1/4"	1 1/2"	2"	2 1/2"	3"	4"	5"	6"
B	45	45	54	65	69	80	84	85	94	94	112
E	32	32	40	48	49	54	59	60	62	62	72
G	53	53	60	78	85	96	110	127	156	185	220



TYPE-B

SIZE	1/2"	3/4"	1"	1 1/4"	1 1/2"	2"	2 1/2"	3"	4"	5"	6"
A	14	14	24	28	35	51	58	72	98	122	145
B	52	52	64	72	73	80	90	94	101	102	118
E	32	32	40	48	49	54	59	60	62	32	72
G	53	53	60	78	85	96	110	127	156	185	220



TYPE-Dus Plug

SIZE	1/2"	3/4"	1"	1 1/4"	1 1/2"	2"	2 1/2"	3"	4"	5"	6"
A	21	21	24	28.5	36	45	56.5	73	98	122	148
B	37	37	44	55	64	68	70	80	80	80	98
E	24	24	30	38	41	43	45	52	48	48	58