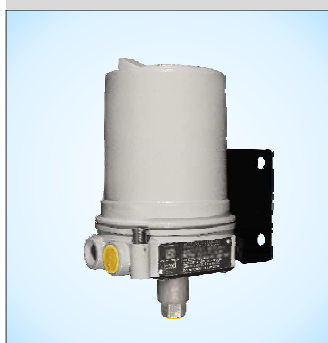


### Pressure switches – Robust construction

Instrument Model	Sensor and Material	Range	On-off Differential	Max. Working Pressure	Contact Rating
201	<b>Bellows</b> 316LSS	(-)1 – 0 bar to 15 – 75 bar	Fixed	Upto 80 bar	5A / 15A 250V AC
203	<b>Bellows</b> 316LSS	(-)1 – 0 bar to 15 – 75 bar	Wideband Adjustable	Upto 80 bar	15A 250V AC
281 (Dual Set point)	<b>Bellows</b> 316LSS	0.08 – 0.4 bar to 10 – 60 bar	Fixed	Upto 80 Bar	5A / 15A 250V AC
204	<b>Diaphragm</b> 316LSS	(-)1 – 0 bar to 1.5 – 15 bar	Fixed	100 bar / 200 bar	5A / 15A 250V AC
021 (Draft & Compound Ranges)	<b>Diaphragm</b> Nitrile / EPDM / SS Silicone / Neoprene	(-)100 – 0 mbar to 0.4 – 4 bar	Fixed	Upto 7 bar	5A / 15A 250V AC
023 (Draft & Compound Ranges)	<b>Diaphragm</b> Nitrile / EPDM / SS Silicone / Neoprene	(-)100 – 0 mbar to 0.4 – 4 bar	Wideband Adjustable	Upto 7 bar	15A 250V AC
S21	<b>Diaphragm Sealed Piston</b> 316LSS / Monel	(-)1 – 1.5 bar to 10 – 100 bar	Fixed	Upto 155 bar	5A / 15A 250V AC
S24	<b>Diaphragm Sealed Piston</b> 316LSS / Monel	0.4 – 2.5 bar to 100 – 700 bar	Fixed	Upto 1000 bar	5A / 15A 250V AC

GK – 201 / 203 / 281



GM – 204



GM – 021



GR – 204



## Process Industry Series

### Pressure switches – OEM Series

Instrument Model	Sensor and Material	Range	On-off Differential	Max. Working Pressure	Contact Rating
PS01	Diaphragm Sealed Piston / Diaphragm 316LSS	(-)-1 – 1.5 bar to 100 – 700 bar	Fixed / Adjustable (low ranges)	Upto 1000 bar	5A / 15A 250V AC
901	Bellows 316LSS/ Phosphor Bronze	(-)-1 – 0 bar to 7 – 35 bar	Fixed	Upto 52 bar	15A 250V AC
902	Bellows 316LSS/ Phosphor Bronze	0.2 – 1.6 bar to 7 – 35 bar	Narrowband Adjustable	Upto 52 bar	15A 250V AC
903	Bellows 316LSS/ Phosphor Bronze	(-)-1 – 0 bar to 7 – 35 bar	Wideband Adjustable	Upto 52 bar	15A 250V AC
921	Diaphragm Sealed Piston 316LSS / Monel	(-)-1 – (+)1.5 bar to 10 – 100 bar	Fixed	Upto 155 bar	5A / 15A 250V AC
924	Diaphragm Sealed Piston 316LSS / Monel	0.4 – 2.5 bar to 100 – 700 bar	Fixed	Upto 1000 bar	5A / 15A 250V AC
DM601	Diaphragm 316LSS	0.2 – 1.6 bar to 1.6 – 16 bar	Fixed	Upto 60 bar	15A 250V AC

PS01



GH – 901 / 902 / 903



GH – 921



DM – 601

